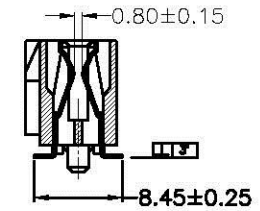
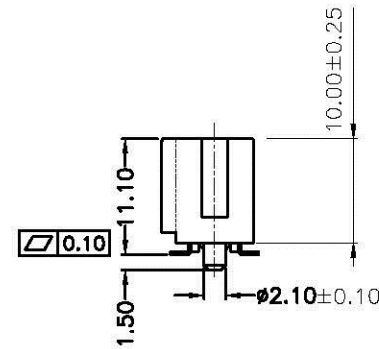


PIN數	A	B	C	D
36	7.65	6.00	25.00	9.30
64	21.65	20.00	39.00	23.30
98	38.65	37.00	56.00	40.30
164	71.65	70.00	89.00	73.30



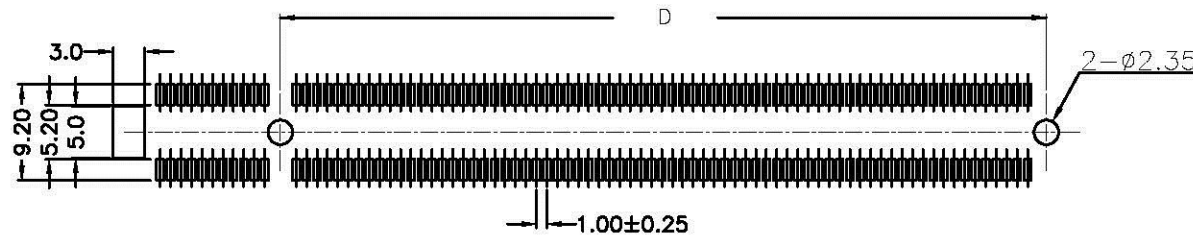
SECTION: A-A

Note:

- 1:Electrical Performance
 - 1.1.Dielectric Withstanding Voltabge: 500V/AC For 1.0 Minute.
 - 1.2.Contadt Resistance:30mΩ Max
 - 1.3.Insulation Resistance:1000MΩ Min
- 2.Mechanical Performance.
 - 2.1.CONTACT INSERTION FORCE: 0.115Kg Max Per.Contact Pair.
 - 2.2.CONTACT WITHDRAWAL FORCE: 0.015Kg Min Per.Contact Pair.
 - 2.3.Terminal Retention Force (in housing): 0.5Kg Minper Terminal.
- 3.Material & Finish:
 - 3.1.Insulator:Hi-Temp NY-9T UL 94V-0,260"/10Sec, Black
 - 3.2.Contact Plating: Tin Plating At Solder Tail Area; Gold Plating At Mating Area, All Over Nickel Plating.
- 4.Environmental:Operating Temperature: -55°C~+85°C

PCIX-VP-xxx-LF
LEADFREE
036.064.098.164 WAY

RoHS Compliant



PCB LAYOUT

Allconnectors

www.allconnectors.de
Tel.: 0049 711 7009300
70794 Filderstadt - Germany

info@allconnectors.de
Fax: 0049 711 7009304
Kettamerstr. 25

PART NO. PCIX-VP-xxx

DWG NO. PCIX-VP-xxx

FILE NO.

UNIT / mm

CHECKED BY CY

DRAWING BY

PROJECTION

SCALE 1:1

TOLERANCES ARE

X ±
.X ± 0.20
.XX ± 0.10
.XXX ± 0.001
ANG

DESCRIPTION:

PCI PH:1.0 SMT 成品

AREA

REVISIONS

DATE